



HONOLULU ACADEMY OF ARTS ACADEMY ART CENTER

2011 Summer Course Catalog



MAKE LEARN LIVE ART

WWW.HONOLULUACADEMY.ORG > LEARN > CLASSES

Contact:

808.532.8741
artschool@honoluluacademy.org

Academy Art Center at Linekona
1111 Victoria St.
(between Beretania and Young streets)

Office hours:

To May 2:
Tues–Fri / 9am–noon, 1–4pm / Closed noon–1pm
Sat / 10am–noon, 1–3pm / Closed noon–1pm

May–August:
Mon–Fri / 9am–noon, 1–4pm / Closed noon–1pm

Parking:

Parking is available in the Honolulu Academy of Arts parking lot located behind the Art Center, accessible from Beretania Street and Young Street. Parking fees are \$3 for four hours with a validation from the Art Center security guard between 7am and 4pm, and \$3 flat rate after 4pm. Metered street parking is also available on Beretania, Victoria and Young streets.

CONTENTS

ABOUT US	1–2
YOUNG ARTISTS	3–6
YOUNG ARTIST CLASSES	5
EXPLORING ART	
CERAMICS	
DRAWING & PAINTING	
CARTOONING	
ART CAMP	6
SUMMER ART INTENSIVE	
PARENT–CHILD EXPLORING ART	
ADULT CLASSES	7–24
ART HISTORY & CRITICISM	9
DRAWING / PAINTING	9–12
REGISTRATION FORMS	INSERT
INSTRUCTOR GALLERY	
PRINTMAKING	13–14
TEXTILES & FIBER	15
POLYMER CLAY	16
GLASS	
BONSAI	
CERAMICS	17–18
METAL / JEWELRY	19–20
VSA HAWAI‘I AT LINEKONA	21
HAA MEMBERSHIP FORM	22
MORE HAA EDUCATIONAL PROGRAMS	23
ART CENTER GALLERY SCHEDULE	24

THE ACADEMY ART CENTER AT LINEKONA

The Academy Art Center is the hub of the Honolulu Academy of Arts' arts education programs. Education was the driving force behind the founding of the museum, and the Academy has offered classes and tours since it opened in 1927. Generations of artists, from noted children's book illustrator Mercer Mayer to painter Dorothy Faison got their start taking art classes at the Honolulu Academy of Arts. In May 2010, the Academy centralized its educational programs under the umbrella of the Academy Art Center in an effort to make better use of resources and better meet the needs of our local audiences. The Academy Art Center reaches approximately 60,000 children and adults each year through studio art classes, workshops with visiting artists, school programs, outreach programs, and exhibitions.

The Academy Art Center at Linekona provides our local community with opportunities to create, explore, and appreciate art. Throughout the year, the classrooms at the Art Center are full of children and adults painting, drawing, sculpting, or working with metal. Some students are beginners and others have been practicing their art for years. The Art Center has six dedicated art studio classrooms, a metals lab, ceramics studio, printmaking studio, two galleries for special exhibitions, and a meeting room for local arts organizations.

HONOLULU ACADEMY OF ARTS MUSEUM

The Honolulu Academy of Arts is dedicated to the collection, preservation, interpretation, and teaching of the visual arts, and the presentation of exhibitions, films and videos, performing arts, and public programs specifically relevant to Hawai'i's ethnically diverse community.

At the opening of the Honolulu Academy of Arts on April 8, 1927, founder Anna Rice Cooke (Sept. 5, 1853–Aug. 8, 1934) read this dedication statement:

“That our children of many nationalities and races, born far from the centers of art, may receive an intimation of their own cultural legacy and wake to the ideals embodied in the arts of their neighbors...that Hawaiians, Americans, Chinese, Japanese, Koreans, Filipinos, Northern Europeans and all other people living here, contacting through the channel of art those deep intuitions common to all, may perceive a foundation on which a new culture, enriched by the old strains may be built in the islands.”

The Honolulu Academy of Arts is Hawai'i's premier art museum, with a collection of more than 50,000 works. An encyclopedic museum where original works of art can be experienced in state-of-the-art galleries, it has major strengths in the arts of Asia, European and American painting, and graphic and decorative arts. With education as its mission, the Academy also administers the Academy Art Center at Linekona, the largest private art school in the Islands.



YOUNG ARTISTS

Museum tours and films are an integral part of the Academy Art Center's Young Artist programming. All supplies are included in class tuition. Although aprons are provided, please wear proper attire—some art processes can get messy! Footwear is required (slippers are acceptable).

All classes subdivided by grade level. Applicants should register for the grade just completed in school. Children must be at least five years old and in kindergarten to enroll in classes.

Young Artist summer exhibition:
July 30–Aug 14
Exhibition opening reception:
July 30 / Sat / 2–4pm

Thanks to the generosity of donors, the Academy Art Center offers a limited number of scholarships for Young Artist classes. Recipients are selected based on talent and financial need. Call 808.532.8742 for applications and more information. Deadline is May 21.



YOUNG ARTIST CLASSES
ART CAMP
PARENT-CHILD EXPLORING ART
SUMMER ART INTENSIVE



YOUNG ARTIST CLASSES

Tues–Fri / June 21–July 27 / 22 sessions
\$275 per course (\$265 for HAA members); fee includes supplies
See registration form insert for available grade levels and times

EXPLORING ART

Includes drawing, painting, printmaking, sculpture in clay and other media, enhanced by films and museum gallery visits. Classes are divided by grade level and projects are planned by the instructor to be age specific. Grades K–4
 Children must have completed kindergarten and be five years old.

DRAWING & PAINTING

Includes experimentation in a variety of drawing and painting techniques using ink, pencil, charcoal, Conté crayon, watercolor, acrylics, pastel and mixed media. Grades 4–12

CERAMICS

Students will create sculptural and functional artwork. Emphasis will be on hand building. Instruction will include discussion of clay, glazing and the kiln firing process. Grades 3–12

CARTOONING

In this exciting, fun class for children who enjoy cartoon art, students learn how to develop their own original characters through lessons in facial expression, action poses, costumes and storytelling. The class uses group brainstorming sessions as a key for generating new ideas. Grades 4–7

SUMMER ART INTENSIVE

Tues–Fri / 8am–2:45pm / \$795 (\$765 for HAA members) / 22 sessions

Children grades 4 and up can create their own all-day program by taking three classes at a discounted rate. Choose from classes such as Cartooning (grades 4–7), Ceramics (grades 3–12), Mixed Media Sculpture (grades 7–12), Drawing & Painting (grades 5–7 and 8–12), and Exploring Art. See the attached registration form for class hours. For advice on class selection, call the Art Center administration office at 808.532.8741. Please bring a lunch and snacks.

ART CAMP

Tues–Fri / 8am–2:45pm / June 21–July 25
22 sessions
\$825 (\$795 for HAA members)

Make it a summer of art! This special all-day program for grades 1–3 at the Academy Art Center includes drawing, painting, sculpture in clay and other 3D media, printmaking and textiles, as well as tours and sketching sessions at the Honolulu Academy of Arts' galleries. Recess is held 9:45–10:15am, and a supervised lunch break will be held noon–1pm. Please bring a lunch and snacks.

PARENT-CHILD CLASSES

Mon / 9–11am / June 20–July 25
(no class July 4) / 5 sessions
\$130 (\$120 for HAA members)
\$75 for an additional child

A special course for parents (or grandparents or aunts) and their pre-school children, age 3–5. Sessions include projects in painting, printmaking, drawing, collage, clay, and mixed media.



ADULT ARTISTS

May 23–August 26

All classes welcome
beginners and advanced
students, unless
otherwise noted.



ART HISTORY DRAWING / PAINTING

ART HISTORY WORKSHOP

MODERN MASTERS SEMINAR: JACKSON POLLOCK Paul Levitt

June 2, 9 and 16 / Thurs / 6–9 pm
3 sessions / \$75 / Community Room

“Is he the greatest living painter in the United States?” That’s what *Life* magazine asked readers in its seminal profile on Jackson Pollock in August 1949. Investigate the life and legacy of this legendary painter in this three-night seminar on Pollock and the New York School. Through lively presentations and class discussions, supplemented by rare historic videos, workshop participants explore the man, the myth and Pollock’s influence on future generations of artists. This seminar is for everyone, from novice art enthusiasts to docents and professional artists.

DRAWING AND PAINTING

PORTRAITURE: ME, MYSELF AND YOU Calvin Collins

Mon / 6–9pm / May 23–Aug 22
(no class May 30, July 4) / 12 sessions
\$220 / Rm 200

Working from mirrors, live models and each other, students develop a portfolio of portraits in the medium of their choice. Class covers art fundamentals—composition, value and proportion. Topics include erasure and editing, expression and development of portraiture style.

PAINTING 1 & 2 James Goodman

Tues / 6–9pm / May 24–Aug 23 / 14 sessions
\$240 / Rm 200

Beginning students are introduced to oil or acrylic painting in a simplified, painless way. Learn about contemporary and Old Master techniques in a relaxed, upbeat environment. Instructor guides advanced students in the development of their own artistic vision and personal expression.

PAINTING AND DRAWING THE PORTRAIT Mark Norseth

Tues / 6–9pm / May 24–Aug 23
14 sessions / \$295 / Rm 201

Open to painting and drawing media, this studio class provides an opportunity to learn and practice the basics of painting and drawing the human head from a live model. A practical approach to portraiture, topics include: anatomy and structure, lighting, color selection, color mixing, and techniques that will optimize your ability to see and paint the human head in a convincing, expressive way.

WATERCOLOR PAINTING FROM PHOTOGRAPHS

George Woollard
Tues / 6–9pm / May 24–June 28 / 7 sessions
\$120 / Rm 203

The class focuses on composition and technique. Bring photos—either your own or from a magazine—to use as subject material. Our purpose is to interpret the subject rather than copy it. Students explore the fluidity, fluency and transparency of watercolor. Instruction will be given by way of demonstration and critique.

ADVANCED SOFT PASTEL

Helen laea
Wed / 6–9pm / July 6–Aug 17 / 7 sessions
\$120 / Rm 203

This course explores a dry/wet technique using soft pastel on sanded surfaces. Students begin working on sanded paper, available for purchase from the instructor, before learning to make their own sanded surfaces. Students work from photographs.

OIL PAINTING

Andrew Rose
Wed / 6–9pm, May 25–Aug 17
(no class June 29, July 20) / 11 sessions
\$190 / Rm 200

Receive individualized instruction and be inspired by other artists in this open studio format for novice to advanced students. From technical improvements in brush, medium, drawing, and color choices to conceptual developments in composition, subject, scale, and series, Oil Painting will help you achieve your personal art goals in a relaxed setting.

LIFE DRAWING STUDIO

Mark Norseth
Thurs / 6–9pm / May 26–Aug 25
14 sessions / \$295 / Rm 201

For students wishing to draw the figure in a stimulating, informal studio setting. Each evening, motivated models provide a series of poses ranging from 2 to 45 minutes. Advice on materials, techniques, approaches to drawing, and individual critique will be available.

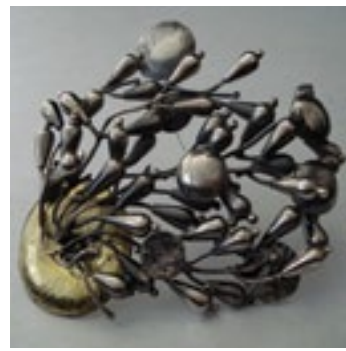
INSTRUCTOR GALLERY



Chunghie Lee pg 15



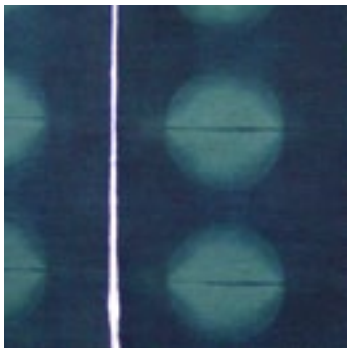
Cynthia Wiig pg 19



Komelia Hongja Okim pg 20



Roger Whitlock pg 12



Darius Homayounpour pg 15



Brenda Ching pg 19



Eun Mee Chung pg 16



Regina Bode pg 11



Gay Jefferson pg 12



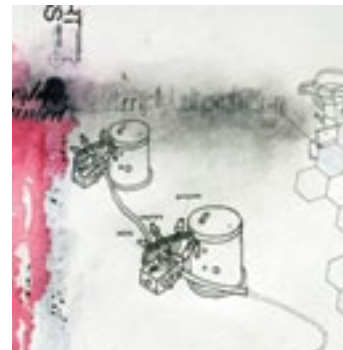
Laura Smith pg 14



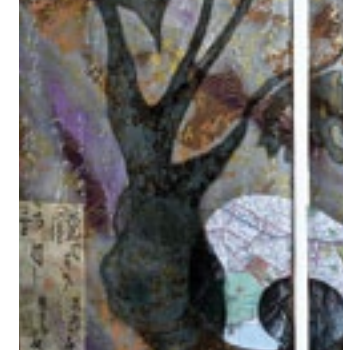
Rob Molyneux pg 13



Calvin Collins pg 9



Kirsten Simonsen pg 11



Jim Goodman pg 9



David Smith pg 13



Christine Harris-Amos pg 13



Daven Hee pg 16 & 17



Jon Vongvichai pg 17



Joel Park pg 17

WORKSHOPS & OPEN STUDIOS

MEET WORLD ART: SKETCHING IN THE MUSEUM

Regina Bode

**May 11–June 15 / Wed / 1–4pm / 6 sessions
\$120 / Rm 201**

Embark on a journey through centuries of world art from Asia, Europe, Hawai'i and the Americas in this introduction to the permanent collection of the Honolulu Academy of Arts. Learn basic sketching and drawing techniques, practiced directly in front of the originals. The class will guide you through the process of creating a final art project, based on drawings and ideas developed in the galleries. Please bring a sketchbook; basic art supplies will be provided.

MANGA BENTO'S MANGA DOJO Featuring Dennis Imoto, Jeff Kats and Jayson Chun

**May 14 / Sat / 10am–4pm / 1 session
\$50 / Rm 200**

Manga Bento's workshop on the creation of a *manga* goes through the process of creating a short layout. Topics include: inking, coloring, tones and the use of computers. Dennis Imoto will demo *shodo* (calligraphy). Guest speaker Jeff Kats will discuss his creative process through his Soul Savior series. University of Hawai'i professor Jayson Chun will discuss the influence of social issues on Japanese manga and the need for Hawai'i's manga artists to speak about their own experiences. Bring your sketchbook, portfolio and any work in progress you need help on. Photocopy an inked drawing if you want to try coloring and/or tones. Please bring a laptop if you wish to work digitally.

COLLAGE + TEXT

Kirsten Simonsen

**May 25–June 29 / Weds / 6–9pm
6 sessions / \$110 / Rm 201**

Explore the relationship between image and text. Collage techniques and methods of applying text will be demonstrated, and ideas about collage and text will be explored. Hand-drawn text, rub-on letters, and found text will be used in combination with images, colored and patterned papers, and drawings. Emphasis is on individual expression.

BEYOND BOUNDARY: FIVE PAINTING LESSONS

Timothy Ojile

**May 28–June 25 / Sat / 10am–4pm
5 sessions / \$300 / Rm 201**

Lesson 1, Self-Rediscovery (autobiographical painting); Lesson 2, Discovering Others (biographical painting, understanding those who mean the most to us); Lesson 3, World Views (seeing the world differently through painting, interpreting what we know in the world through painting); Lesson 4, The Beyond (painting emotions, where does creativity come from and how does it help with daily life); and lesson 5, Expanding Our Notions (finding the central core of pleasure in painting, new ways to paint old ideas).

SKETCH TO PAINTING

Regina Bode

**July 9 / Sat / 10am–4pm
July 10 / Sun / 11am–4pm
2 sessions / \$100 / Rm 200**

This workshop is an introduction to basic sketching and drawing techniques. Participants have the unique opportunity to sketch in front of originals in the galleries of the Honolulu Academy of Arts. Get inspired and influenced by different cultures and world art. Each student is guided individually through the process of creating a final art project, based on drawings and ideas developed in the galleries. Please bring a sketchbook and your favorite materials and tools.

DRAWING & PAINTING (CONT.)

INTO THE LIGHT: A WATERCOLOR WORKSHOP

Roger Whitlock

July 16–17 / Sat & Sun / 9am–3pm

2 sessions / \$150 / Rm 203

In an "into-the-light" painting, the subject is backlit, with the light source illuminating the subject from behind. Most objects in the painting merge into a few large shapes, becoming silhouettes. The subject matter has been simplified; the painting is atmospheric, often dramatic and occasionally mysterious. Students produce into-the-light representational paintings: landscapes, street scenes, cityscapes and interiors. Students are encouraged to bring their own into-the-light sketches and/or photographs (instructor's photos will be available) and plenty of watercolor paper. Recommended for intermediate and advanced students.

SIDE BY SIDE:

CREATIVE WRITING AND VISUAL ART

Tamara Moan and Quala Lynn Young

Aug 1–5 / Mon–Fri / 9am–3pm / 5 sessions

\$275 / Rm 102

This class explores the cross-pollination of words and pictures. Students write, draw, paint, collage, color, print, listen, discuss, look, wander, overlap and weave the mundane and the miraculous together. No previous art making or writing experience necessary. If you're willing to play, be open, cooperative, and curious, this is the class for you. Side by Side culminates in a handmade book of your own design. Some supplies provided; please bring writing paper and pens/pencils

THE MAGIC OF WATERCOLOR

Gay Jefferson

Aug 6–7 / Sat–Sun / 9am–4pm / 2 sessions

\$100 / Rm 203

Enjoy the flow and spontaneity of watercolor. Contrast the transparent, luminous color of wet into wet washes with highlights using other media, including: watercolor, crayon, salt and a bit of collage. New watercolor techniques are also explored: applying color straight from the tube to create bright highlights, brushing it on with a little water to achieve soft opacity, layering different techniques to create a rich medley.

CONTEMPORARY EXPLORATORY DRAWING WORKSHOP

Linda Kane

Aug 8–12 / Mon–Fri / 9am–noon

5 sessions / \$140 / Rm 200

Immerse yourself in the drawing process. Students explore drawing materials and arrive at unexpected outcomes. Activities include some drawing exercises from observation, but with a contemporary, "process-orientated" focus. Other approaches include intuitive responses to media/materials. Participants are encouraged to stay in the studio after each session and continue working. Instructor will have quality paper for sale during workshop.

PRINTMAKING



PRINTMAKING

INTAGLIO

Christine Harris-Amos

Tues / 9–noon / May 24–July 19

10 sessions / \$200 / Printmaking Studio

Students will become familiar with basic techniques of intaglio printmaking. Emphasis is on etching but students will have the opportunity to work with aquatint and/or soft grounds.

SCREEN PRINTING

Rob Molyneux

Thurs / 6–9pm / May 26–July 28

10 sessions / \$205 / Rm 102

Using hand-drawn and photographic images, students learn to use a photomechanical technique to develop multiple color screen prints. Students learn basic hand-printing techniques, multiple-layer registration, color application and theory. Most printing is on paper, but students are encouraged to experiment with textiles, wood, etc.

DIGITAL PHOTO-ETCHING

David Smith

Sat / 9am–noon / May 28–Aug 20

(no class July 23) / 12 sessions

\$255 / Printmaking Studio

Students learn how to take photographic images and translate them into a positive working photo-etching process using Photo Polymer Etching plates (Toyobo Printtight plates), developed with water. Prerequisites: a general working knowledge of Adobe Photoshop and some traditional printmaking experience.

Inks and solvents are included in the lab fee. Students are responsible for the cost of their own printing plates and paper. Plates average around 25 cents per square inch.

WORKSHOPS

PUZZLE PIECE PRINTS

Laura Smith

May 23–June 27 / Mon / 6–9 pm / 6 sessions

\$125 / Printmaking Studio

Make a print with many colors by cutting up your block of wood. Students design and print a multicolor print with one piece of wood by cutting it into puzzle pieces, inking them separately and reassembling them before printing. This is an idea from Edvard Munch who created colorful, expressionistic woodcuts. In addition students will learn easy, foolproof registration, color mixing, tool sharpening, and cutting skills. Great for beginners as well as experienced printmakers who want to try a new twist.

PAGES AND PRINTS

Tamara Moan

Aug 21–25 / Sun–Thurs 9am–1pm

5 sessions

\$140 / Rm 102 and Printmaking studio

Construct an accordion-spine flag book using relief prints for your page design. We'll build a prototype book form with blank pages first. After generating imagery and sketching ideas, designs will be transferred to linoleum. Carved designs are printed on an etching press. Students finish by building a second book that utilizes their prints.



TEXTILE AND FIBER POLYMER CLAY GLASS BONSAI

GLASS

GLASS FUSION: THE BASICS AND BEYOND

Bud Spindt

Mon / 6–9pm / May 23–Aug 22

(no class May 30, July 4) / 12 sessions

\$225 / Rm 102

or

Wed / 6–9pm / May 25–Aug 24 / 14 sessions

\$260 / Rm 102

Make art with fused glass! Introduction to tools, glass-cutting techniques and kiln-forming practice in hands-on sessions. Topics include project design, glass types and selection, kiln and mold preparation, firing schedules, annealing, compatibility testing and cold working your glass art. Insightful slide shows featuring the work of glass artists from around the world will get creative juices flowing.

15

BONSAI

CONTEMPORARY BONSAI STUDIES

Kahi Ching

Sat / 9–noon / May 28–July 30 / 10 sessions

\$175 / Rm 102

Create contemporary bonsai. Instructor introduces bonsai history and contemporary theory, cultivation, design and documentation (drawing, painting and photography). Also covered: eco-friendly techniques for finding, salvaging and collecting bonsai specimens, and mame (miniature) bonsai and ceramic container projects. Class includes a field trip to observe trees and collect specimens.

16

TEXTILE AND FIBER WORKSHOPS & OPEN STUDIO

WEAVING INDEPENDENT OPEN STUDIO

Carol Lerseth

Tues / 6–9pm / May 24–Aug 23 / 14 sessions

\$150 / Rm 101

Floor looms are available for weavers. There is no formal instruction but beginners can expect help from volunteers. Participants must provide their own materials.

BOJAGI IN HAWAII

Chunghie Lee

May 27–29 / Fri–Sun / 10am–4pm

3 sessions / \$190 / Rm 200

Bojagi, traditional patchwork wrapping cloths, are used in Korea for special occasions and as household coverings and wraps. This class focuses on interpreting and exploring the concept of wrapping and the possibilities of bojagi-making to create two- and three-dimensional art works. Students learn several stitching methods, such as the triple stitching

technique called gekki. The special seaming techniques create stiff and strong linear elements that can be used as design or structural elements. Layering of sheer fabrics provides an additional design element.

Internationally renowned fiber artist Chunghie Lee (BFA and MFA from Hongik University, Seoul, Korea) has been teaching bojagi at Rhode Island School of Design for 10 years.

SHIBORI AND INDIGO DYEING

Darius Homayounpour

Aug 6, 13, 20 & 27 / Sat / 10am–1pm

4 sessions / \$80 (+\$20 material fee paid to the instructor) / Community Room & Annex

This class combines the classical techniques of tie-dye (binding, clamping, and stitching) with the magic of indigo vat dyeing. The basics of traditional and contemporary styles and techniques will be covered. Instruction is also available in simple methods of paste resist depending on student interest. Students are encouraged to apply techniques to their own projects.

POLYMER CLAY WORKSHOP

THE ART OF POLYMER CLAY

Eun Mee Chung

June 15–18 / Weds–Sat / 9am–4pm

4 sessions / \$200 (\$40 materials fee paid to the instructor) / Rm 101

This workshop introduces basic design and color use with polymer clay. Topics include basic striped slab, two to three skinner blends and several kinds of cane making with an emphasis on fundamental millefiori techniques. Student creates jewelry (necklace, brooch and earrings) and art objects. Beginners are welcome. Eun Mee Chung (MFA from the University of Wisconsin, MFA from Hong Ik University, Seoul Korea) is adjunct professor at Montgomery College in Rockville, Maryland.

CERAMICS



All classes held in the Ceramics Studio.
Tuition does not include clay.
Students must purchase all clay from the Academy Art Center.
Students enrolled in a ceramics class may use the studio during posted open studio hours.
Students must provide their own tools.

CERAMICS

RAKU

Joel Park

Tues / 6–9pm / May 24–Aug 23 / 14 sessions
\$260

Working with hand-built and wheel-thrown stoneware, students learn about raku firing, glazing, resist application and more. Tools, safety and other low-fire methods including “popcorn” and horsehair firing are discussed.

CERAMICS

Jon Vongvichai

Wed / 6–9pm / May 25–Aug 24 / 14 sessions
\$260

Instructor demonstrates hand-building and wheel-throwing techniques, with an emphasis on exploring the versatility of the wheel. Instruction in selection of clay bodies, glaze application, kiln use, craftsmanship and creating a personal aesthetic.

CREATIVE CLAY

Cynthia Tesoro

Thurs / 6–9pm / May 26–Aug 25
14 sessions / \$260

Learn beginning and intermediate clay handling techniques. Slab, coiled and wheel-thrown forms are explored. Individual projects encouraged. Course includes discussions on high fire glazes, glaze application and kiln operation.

LIVING POTS

Daven Hee

Sat / 9–noon / June 18–August 6
8 sessions / \$150

Instruction includes how to use a handheld torch to make rapid additions of wheel-thrown parts and glaze layering techniques. Class includes demonstrations; slide lectures, individualized coaching and group critique.

Supplies: wheel-throwing tools, stoneware clay (Soldate 60 is best; no porcelain), hand towel, hand held propane torch with propane.

Daven Hee is a potter and ceramic artist with a BFA from the University of Hawai‘i and a MAVA from the Australian National University in Australia. Daven has taught ceramics at the The Ala Wai Arts and Crafts Center, Hawaii Potter’s Guild, University of Hawai‘i and currently teaches at Mid-Pacific Institute.



WORKSHOPS & OPEN STUDIO

LIVING POTS: A WORKSHOP

Daven Hee

June 11 / Sat / 9–4pm / 1 session
\$75

The handheld torch is a ceramic tool that speeds-up the creative process. Using a torch, rapid additions of wheel-thrown parts can be assembled, enhancing spontaneity and creativity. Forms like teapots can be made and assembled in as little as 15 minutes.

Supplies: wheel-throwing tools, stoneware clay (Soldate 60 is best; no porcelain), hand towel, hand-held torch and one bottle of propane.

CERAMICS OPEN STUDIO

Time and dates will be posted as they become available.



METAL / JEWELRY

All classes held in the Art Center Metals Studio unless otherwise noted

METAL / JEWELRY

JEWELRY I
Brenda Ching
 Tues / 6–9pm / May 24–Aug 23 / 14 sessions
 \$275

Learn the basics of making jewelry from metal sheet and wire. Students learn how to saw, solder, cold connect, shape, and finish metal to create jewelry via assigned projects and their own ideas. Class also covers texturing (hammered, stamped, roller printed) and simple stone setting. Some tools provided, personal hand tools recommended, list available. Additional fees for metals used.

JEWELRY II
Brenda Ching
 Wed / 6–9pm / May 25–Aug 24 / 14 sessions
 \$275 (additional supply fees for some projects)

In this intermediate class, students review and fine-tune techniques learned in Jewelry 1. Additional topics may include etching, flush and tube settings, synclastic and anticlastic shaping, and fold forming. Prerequisite: Jewelry 1 or similar experience in sawing, soldering, and riveting.

GEMOLOGY
Brenda Reichel
 Tues / 6–9pm / June 7–Aug 16 / 11 sessions
 \$190 / Community room

Learn to identify the latest in gemstones: black diamonds, pink diamonds, blue, yellow and even chocolate diamonds. Learn about tanzanite, rubies, emeralds, sapphires and mystical gems; learn how they are graded and cut. The history of gemstone lore and mythology will be discussed. Additional topics include jade, Hawaiian jewelry, Ni‘ihau shell lei and precious metals. Learn to ask the right questions and be a discriminating shopper. Beginners and repeat students welcome.

INTRODUCTION TO JEWELRY FABRICATION
Cynthia Wiig
 Fri / 9:30am–12:30pm / May 27–August 26
 14 sessions / \$275

Begin with the basics and then discover your own creativity. Fabrication techniques include piercing, texturing, forging, soldering and finishing. Attention is also given to caring for the tools. No previous experience required.

WORKSHOPS & OPEN STUDIO

METALS LAB INDEPENDENT OPEN STUDIO
 Sat / noon–3pm / May 28–Aug 27 (not open July 9 or 16) / 12 sessions
 Mon / 6–9pm / May 23–Aug 15 (not open May 30 or July 4) / 12 sessions
 \$150 / Individual sessions \$15

Open studio is for experienced metalsmiths who have taken a basic metals class or can demonstrate competency in the studio. The studio is for personal projects only, not for business production. Minimal supplies available; no instruction provided.

ADVANCED FABRICATION TECHNIQUES: A WORKSHOP
Komelia Hongja Okim
 July 9 (10am–5pm) / July 10 (noon–7pm)
 July 16 (10am–5pm) / July 17 (noon–7pm)
 4 sessions / \$300

Make a brooch or serving spoon using multiple fabrication techniques, including forming, sinking, raising, hydraulic press, forging, mitering, kum-boo, coloring. Individualized instruction with an emphasis on design is available.

Some metal working experience required. Material list available, some metals available for purchase.

Komelia Hongja Okim is a professor of art metals at Montgomery College in Rockville, Maryland.

SHIPPO: JAPANESE ENAMELING (CLOISSONNÉ) AND SILVER CLAY
Kazuko Inomata
 Aug 6, 7, 13 & 14 / 10am–4pm / 4 sessions
 \$150 (plus supply fee paid to the instructor)
 Rm 102

Learn the ancient art of shippo to produce works with jewel-like enamel color on a base of metal or ceramic. Shippo means “seven treasures,” which, according to a Buddhist sutra, are gold, silver, lapis, crystal, giant clam, coral and agate. Beginning projects include small boxes and accessories. Experienced students may have a chance to participate in an International Enameling Art Exhibition in Tokyo. Silver clay, which can be modeled and baked into pure silver, works well with enamel colors, creating brilliant works of jewelry art. Kazuko Inomata teaches at BAIKA Women’s University in Osaka and the Japan Mint.



VSA HAWAII AT LINEKONA

ANNIE MORIYASU
Executive Director

KATHLEEN O'BRYAN
Creative Director

VSA Hawaii's mission is to promote awareness of the value of arts in the daily lives of people with disabilities, and to foster opportunities for the full inclusion and participation in all the arts by youth and adults with disabilities, especially the unserved and underserved in Hawaii.

VSA Hawaii is an affiliate of VSA—The International Organization on Arts and Disability, an international nonprofit organization affiliated with the John F. Kennedy Center for Performing Arts. VSA International was founded in 1974 by Ambassador Jean Kennedy Smith to create a society where people with disabilities learn through, participate in, and enjoy the arts.

HAWAII ARTS@WORK — CTE (DOE Career and Technical Education Pathways)

The National Endowment for the Arts awarded a "Learning in the Arts for Children and Youth Grant" to VSA Hawaii, in partnership with the Academy Art Center at Linekona. The grant funds Hawaii Arts@Work, a program that

matches high school students with master artists based on media and style for a five-month apprenticeship. The program is open to in-school youth (grades 10 to a year out of high school) with and without disabilities in unserved and underserved areas.

The third session begins April 18, 2011. Apprenticeships begin with an intensive two-week museum-based study of the fundamentals of visual art, followed by eight weeks with master artists working in different media and disciplines. Individual portfolios will be developed. Studio training will be followed by apprenticeship placements with master artists for approximately five months.

The project is a partnership with the Academy Art Center and the University of Hawaii Center for Disability Studies in the College of Education. For more information, call 808.295.0659 or vsahawaii@gmail.com

STUDIO 202 — Professional Development Mon–Fri (ongoing afternoons)

This supported open studio for artists with physical, mental or intellectual disabilities aims to develop professional skills including production, marketing, technical assistance and business management. All artists are self-directed working in various media.

For more information, call 808.469.6651 or vsahawaii@gmail.com

HONOLULU
ACADEMY
OF ARTS

BECOME A MEMBER!

TAKE ADVANTAGE OF ALL THE BENEFITS MEMBERSHIP HAS TO OFFER—INCLUDING TUITION DISCOUNTS.

NEW MEMBER

STUDENT—\$20

Proof of current full-time high school or college enrollment required.

- Free admission for one person to the Honolulu Academy of Arts
- Invitations to select opening receptions and member-only events
- Online access to Academy Membership Magazine
- Discounts: Academy Art Center classes, film and concert tickets at the Doris Duke Theatre, Pavilion Café (10%) and Academy Shop (10%)

NATIONAL/INTL./NEIGHBOR ISLAND—\$40

Must reside outside of o'ahu.

- Free admission for one person to the Honolulu Academy of Arts
- Invitations to select opening receptions and member-only events
- Online access to Academy Membership Magazine
- Discounts: film and concert tickets at the Doris Duke Theatre, Pavilion Café (10%) and Academy Shop (10%)

INDIVIDUAL 1 YEAR—\$55; 2 YEAR—\$90

- Free admission for one person to the Honolulu Academy of Arts
- Invitations to select opening receptions and member-only events
- Bi-monthly subscription to Academy Membership Magazine
- Discounts: Academy Art Center classes, film and concert tickets at the Doris Duke Theatre, Pavilion Café (10%) and Academy Shop (10%)

FAMILY 1 YEAR—\$95; 2 YEAR—\$175

- Free admission for two adults and member's children under 18 to the Honolulu Academy of Arts
- Invitations to select opening receptions and member-only events
- Bi-monthly subscription to Academy Membership Magazine
- Discounts: Academy Art Center classes, film and concert tickets at the Doris Duke Theatre, Pavilion Café (10%) and Academy Shop (10%)

SUBSCRIBER—\$150

- Free admission for two adults and member's children under 18 to the Honolulu Academy of Arts
- Reciprocal membership in more than 40 U.S. museums
- Invitations to additional opening receptions and member-only events
- Bi-monthly subscription to Academy Membership Magazine
- Discounts: Academy Art Center classes, film and concert tickets at the Doris Duke Theatre, Pavilion Café (10%) and Academy Shop (10%)

RENEWING MEMBER

CONTRIBUTOR—\$350

- Free admission for two adults and member's children under 18 to the Honolulu Academy of Arts
- Reciprocal membership in more than 40 U.S. museums
- Invitations to additional opening receptions and member-only events
- Bi-monthly subscription to Academy Membership Magazine
- Discounts: Academy Art Center classes, film and concert tickets at the Doris Duke Theatre, Pavilion Café (10%) and Academy Shop (10%)

SPONSOR—\$700

- Free admission for two adults and member's children under 18 to the Honolulu Academy of Arts
- Reciprocal membership in more than 40 U.S. museums
- Invitations to additional opening receptions and member-only events
- Bi-monthly subscription to Academy Membership Magazine
- Discounts: Academy Art Center classes, film and concert tickets at the Doris Duke Theatre, Pavilion Café (10%) and Academy Shop (10%)

SOCIETY OF ACADEMY FELLOWS

GUARDIAN—\$1,500

BENEFACTOR—\$2,500

PATRON—\$5,000

DIRECTOR'S CIRCLE—\$10,000

CHAIRMAN'S CIRCLE—\$25,000

- Free admission for two adults and member's children under 18 to the Honolulu Academy of Arts
- Free museum admission for an additional adult guest when accompanied by a member
- Free gift family-level membership to the household of your choice
- Reciprocal membership in more than 40 U.S. museums
- Invitations to special fellow-only opening receptions and all member-only events
- Bi-monthly subscription to Academy Membership Magazine
- Complimentary certificates for the Doris Duke Theatre and Pavilion Café
- Special Fellows-only travel opportunities
- Free annual parking pass for the Academy Art Center parking lot
- Discounts: Academy Art Center classes, film and concert tickets at the Doris Duke Theatre, Pavilion Café (10%) and Academy Shop (20%)

PLEASE RETURN THIS PAGE WITH PAYMENT.

Please enclose separate payments for membership and class registration. Allow 3–4 weeks to receive your permanent membership card(s). Call Membership Services for more information at 808-532-8724.

MEMBER INFORMATION

Name: _____ 2nd adult (for family+ levels): _____

Mailing address: _____

City: _____ State: _____ Zip: _____

Home telephone: _____ Email 1: _____

Cellular telephone: _____ Email 2: _____

MAKE CHECKS PAYABLE TO THE HONOLULU ACADEMY OF ARTS OR CHARGE TO:

Visa Mastercard American Express Discover JCB

Credit card #: _____ Expiration date: ____/____/____

Name on card: _____ Amount: \$ _____

Signature: _____

21

22

HONOLULU ACADEMY OF ARTS EDUCATIONAL PROGRAMS

OUTREACH & SCHOOL PROGRAMS

ART TO GO is an after-school outreach program dedicated to serving Hawaii's youth (grades K–12) where art programs may be absent or lacking. Through partnerships with public schools and other social service agencies, the Academy develops site-specific programming tailored to participants' needs. Class durations and curriculum vary, but all culminate in an exhibition held at the host's site featuring the participants' artwork. Art-to-Go's aim is to stimulate young people's creativity, provide them with opportunities to learn new skills, and encourage confidence in self expression.

The **AMBASSADOR PROGRAM** is an arts outreach program combining a docent-guided museum tour with two classroom visits by an Academy Ambassador. Before the tour, students explore the "Museum in a Box" brought to their classroom. After the tour, students create an art project that reflects what they have learned. Nine thematic choices are offered: Animals in Art (also offered for Preschool and Special Education), Art of the Ancient Mediterranean, Art of the Pacific, Art of the Philippines, Hawaii and its People, East Meets West, and Roots.

MUSEUM ENRICHMENT PROGRAM (MEP) and **MUSEUM ENRICHMENT PROGRAM FOR SPECIAL EDUCATION (MEPSE)** These long-standing school programs comprise of a tour of the Academy's collection followed by a hands-on art lesson in the Academy Art Center painting studios. MEP is offered for grade five, and MEPSE is offered for special education grades K–12. The programs are free of charge and welcome schools from all districts.

WARRIORS' EYES ON ART PROGRAM is an outreach program for the active duty Warriors in Transition battalion. The program comprises of docent-led museum tours followed by studio art classes.

FAMILY PROGRAMS

On **BANK OF HAWAII SUNDAY**, museum admission is free and families are invited to explore the Academy's galleries, enjoy musical and dance performances, view demonstrations by some of our best local artists and even create some art of your own.

The **ARTHUR & MAE ORVIS ARTIST IN RESIDENCE** program, located in Gallery 30 of the Museum Learning Center (MLC), is a six-week residency open to University of Hawaii graduate art students. Visitors can observe (and sometimes participate) as the artist creates interactive bodies of work.

EDUCATIONAL RESOURCES

TOUR PROGRAMS helps get the most out of your visit to the Honolulu Academy of Arts with a tour. Whether led by one of our knowledgeable docents as part of a private group or wandering the galleries yourself with our free audio tour, we have an option to suit your interests.

CURRICULUM GUIDES are available on the Academy website to help teachers tie the Academy school tour programs with lesson plans that address specific Department of Education Content and Performance Standards.

THE ROBERT ALLERTON ART RESEARCH LIBRARY is Hawaii's largest art library containing 45,000 books and periodicals. Located in the Honolulu Academy of Arts, the library is open to the public. Visit the Academy website for hours.

For more information and resources please visit WWW.HONOLULUACADEMY.ORG. Educational services are located in the Learn menu.

HAA EDUCATIONAL PROGRAMS GALLERY CALENDAR

(G) = MAIN GALLERY

(M) = MEZZANINE GALLERY

APRIL:

(G) HAWAII'S WOOD SHOW
4.8–4.17

(M) DEPOSED: BYGONE
LEADERS OF NATIONS BY
ANTHONY LEE 4.8–4.30

(G) SPRING YOUNG ARTISTS
EXHIBITION 4.23–4.30

MAY:

(G)(M) 2011 HAWAII QUILT
GUILD SHOW: THE PIECEFUL
ART OF QUILTING 5.4–5.15

(G) MOA: BEAUTY THROUGH
THE EYES OF OUR CHILDREN
PAINTING EXHIBITION
5.21–5.28

JUNE:

(G) HAWAII
HANDWEAVER'S HUI
6.2–6.18

(M) MONICA PERREIRA:
MOLOKAI ARTIST
6.21–7.1

JULY:

(M) MONICA PERREIRA:
MOLOKAI ARTIST
6.21–7.1 CONT.

(M) BE ORIGINAL BREAKING
BARRIERS STATEWIDE
7.6–7.26

(G)(M) SUMMER YOUNG
ARTIST EXHIBITION
7.30–8.14

AUGUST:

(G)(M) SUMMER YOUNG
ARTIST EXHIBITION
7.30–8.14 CONT.

(G) 33RD HONOLULU
JAPANESE CHAMBER OF
COMMERCE: COMMITMENT
TO EXCELLENCE EXHIBITION
8.22–9.2

(M) KIRSTEN SIMONSEN
8.22–9.2

SEPTEMBER:

(G) 33RD HONOLULU
JAPANESE CHAMBER OF
COMMERCE: COMMITMENT
TO EXCELLENCE EXHIBITION
8.22–9.2 CONT.

(M) KIRSTEN SIMONSEN
8.22–9.2 CONT.

(G) THE WATER SHOW
9.4–9.24

(M) CHRISTY ROGERS
9.4–10.12

VISIT: WWW.HONOLULUACADEMY.ORG/ART/EXHIBITIONS/UPCOMING OR

WWW.HONOLULUACADEMY.ORG/ART/EXHIBITIONS/CURRENT FOR MORE INFORMATION

𐀀 HONOLULU ACADEMY OF ARTS
ACADEMY ART CENTER
1111 Victoria St.
Honolulu, HI 96814

Visit the new website: www.honoluluacademy.org

Contact:

808.532.8741
artschool@honoluluacademy.org

Academy Art Center at Linekona
1111 Victoria St.
(between Beretania and Young streets)

Office hours:

To May 2:
Tues–Fri / 9am–noon, 1–4pm / Closed noon–1pm
Sat / 10am–noon, 1–3pm / Closed noon–1pm

May–August:
Mon–Fri / 9am–noon, 1–4pm / Closed noon–1pm

